

INSTALLATION INSTRUCTIONS

DESCRIPTION: Transmission Gear Reduction Kit
PART NUMBER: 2HC-E7530-V0
MODEL: '16~ YXZ1000R



⚠ WARNING

Please read and understand these instructions completely before installation to avoid possible injury, or damage to the accessory or vehicle.

NOTICES:

Installation of this kit requires specialized tools and training. This installation should be performed by an authorized Yamaha dealer or qualified mechanic. Please refer to the Yamaha Service Manual for detailed disassembly procedures.

WARRANTY INFORMATION:

Warranty information is on the last page of this document. Note that the warranty page is not numbered.

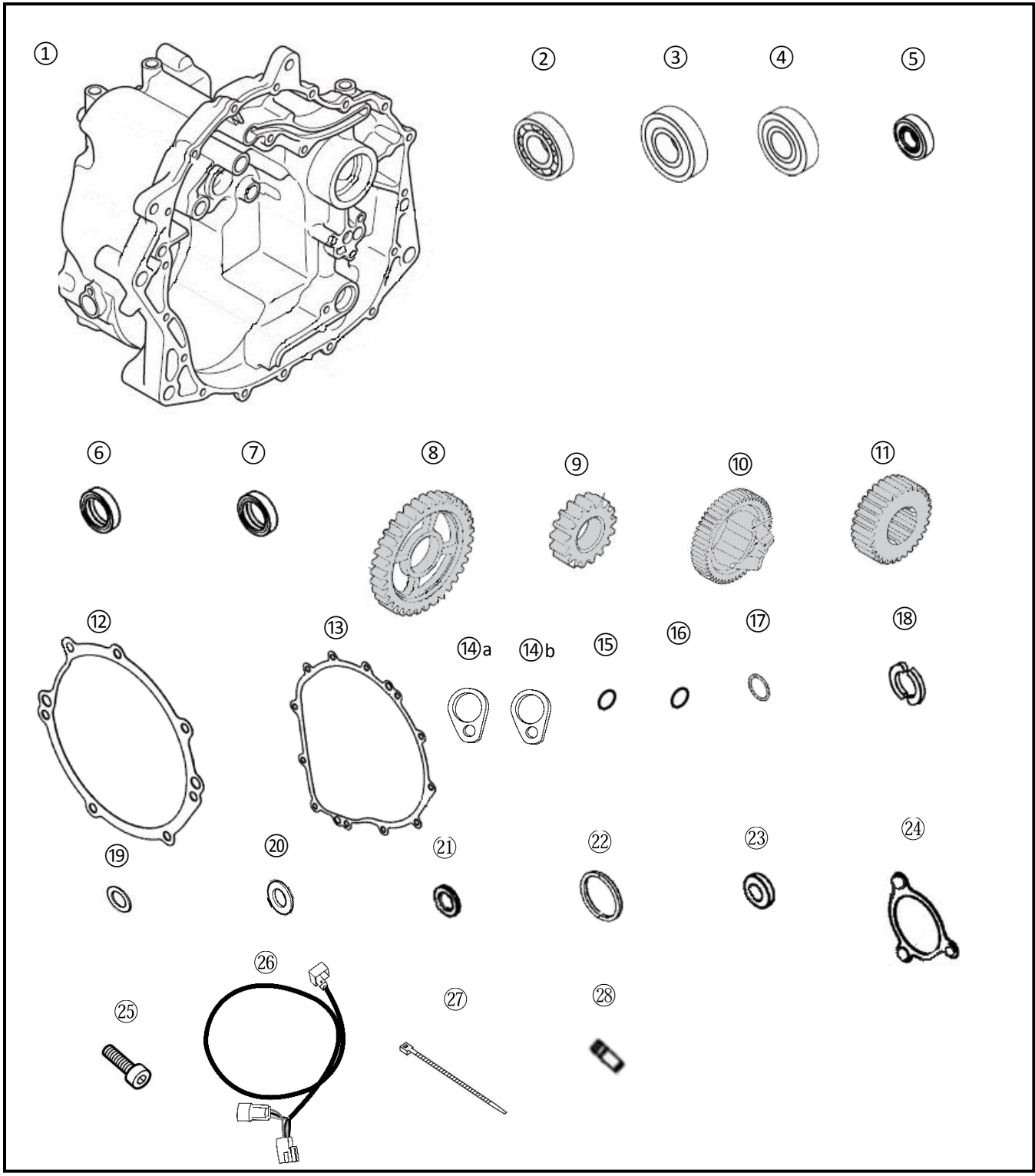
DEALER OR INSTALLER:

These instructions contain important information for future reference and *must* be given to the customer.

PARTS LIST:

No.	Part Number	Description	Qty
--	2HC-E7530-V0	Transmission Gear Reduction Kit	--
①	*	Modified Transfer Case	1
②	93306-37218	Bearing	1
③	93306-30585	Bearing	1
④	93306-37215	Bearing	1
⑤	93306-20483	Bearing	1
⑥	93102-12224	Oil Seal	1
⑦	93102-12321	Oil Seal	1
⑧	*	1st Wheel Gear	1
⑨	*	1st Pinion Gear	1
⑩	*	Middle Driven Gear	1
⑪	*	Middle Drive Gear	1
⑫	2HC-17818-00	Torque Limiter Gasket	1
⑬	2HC-15453-00	Clutch Cover Gasket	1
⑭a	*	Spacer (yellow mark)	1
⑭b	*	Spacer (blue mark)	1
⑮	*	O-Ring Speed Sensor	1
⑯	4D9-81168-00	O-Ring Speed Sensor	1
⑰	93210-17008	O-Ring (gear position sensor)	1
⑱	23P-17529-00	Thrust Washer	2
⑲	90430-10148	Crush Washer	6
⑳	90430-06014	Crush Washer	2
㉑	90430-12213	Crush Washer	1
㉒	93210-192A6	O-Ring	1
㉓	93109-08061	Oil Seal	1
㉔	2HC-17472-00	Gasket	1
㉕	91317-06022	M6x22mm Bolt	1
㉖	2HC-H351A-V0	Speed Sensor Adjuster	1
㉗	*	Cable Ties	4
㉘	137-13115-01	Connector, Suction Pipe	2

* Part supplied with kit only and not available separately.



TIP: If this kit is installed into a used vehicle, Yamaha suggests the clutch, **all splines** on all drive shafts, shift forks, and any other wear items in the transmission be inspected and parts replaced if needed.

PREPARATION:

Use the Service Manual / Transmission section and follow the steps to remove the transmission from the vehicle.

INSTALLATION:

1. Pages 4-7 of this Installation Guide have diagrams, from the service manual and parts fiche, which show where most of the parts in the kit are used. Many of the parts are gaskets and o-rings that must be replaced when the transmission is disassembled. Use the Gaskets, Spacers, O-rings, and Oil Seals during the reassembly of the transmission – refer to the Service Manual/Transmission section for assembly order, torque settings, and thread locker use.
2. Refer to the part number on the box containing your ① transmission case – If you have a B5J case, use the spacer ⑭ with the yellow marking. If you have a 2HC case, use the spacer ⑭ with the blue marking. Discard the unused spacer.
3. Refer to Fig. 1 to find the location to install the Speed Sensor. The Speed Sensor assembly is made up of the original Speed Sensor, o-ring ⑮, spacer ⑭, o-ring ⑯, and is secured with a bolt ⑳.
 - Install o-ring ⑮ on the transmission side of the spacer ⑭ (O-ring ⑮ is packaged with the spacer)
 - Install o-ring ⑯ onto the Speed Sensor. O-ring ⑯ comes in Yamaha packaging.
 - Use the M6x20mm Bolt ㉑ to mount the Speed Sensor assembly to the Transfer Case. The stock bolt is not reused in this installation.
4. Reinstall the transmission. Before re-installing any plastic panels, complete installation of the Speed Sensor Adjuster ㉒. The cable plugs into the speedometer on the underside of the transmission. Note that one connector attaches to the sensor and the other to the connector plugs into the vehicle harness.
5. Route the wire from the Speed Sensor Adjuster up into the battery compartment/center console of the vehicle so that it can be accessed later. As you route the cable, secure it with the 4 Cable Ties ㉓. Secure the wire out of the way of any moving parts or coolant lines. See Fig. 9.

Note: The speedometer adjuster is pre-programmed for your gear reduction kit. Refer to the included adjuster instructions to change values. **Hint:** Wheel and Tire size will affect speedometer readings. If you are using tires and wheels that are not stock size, you may need to adjust the speedometer further.

MAINTENANCE:

Follow standard maintenance procedures and intervals for this model.

CARE AND CLEANING:

Keep all parts free of grit, grime, or other contaminants during assembly.

CUSTOMER SERVICE:

For further information see your Yamaha dealer.

ESTIMATED TIME TO INSTALL: 8.0 HRS

Fig. 1
Modified Transfer Case

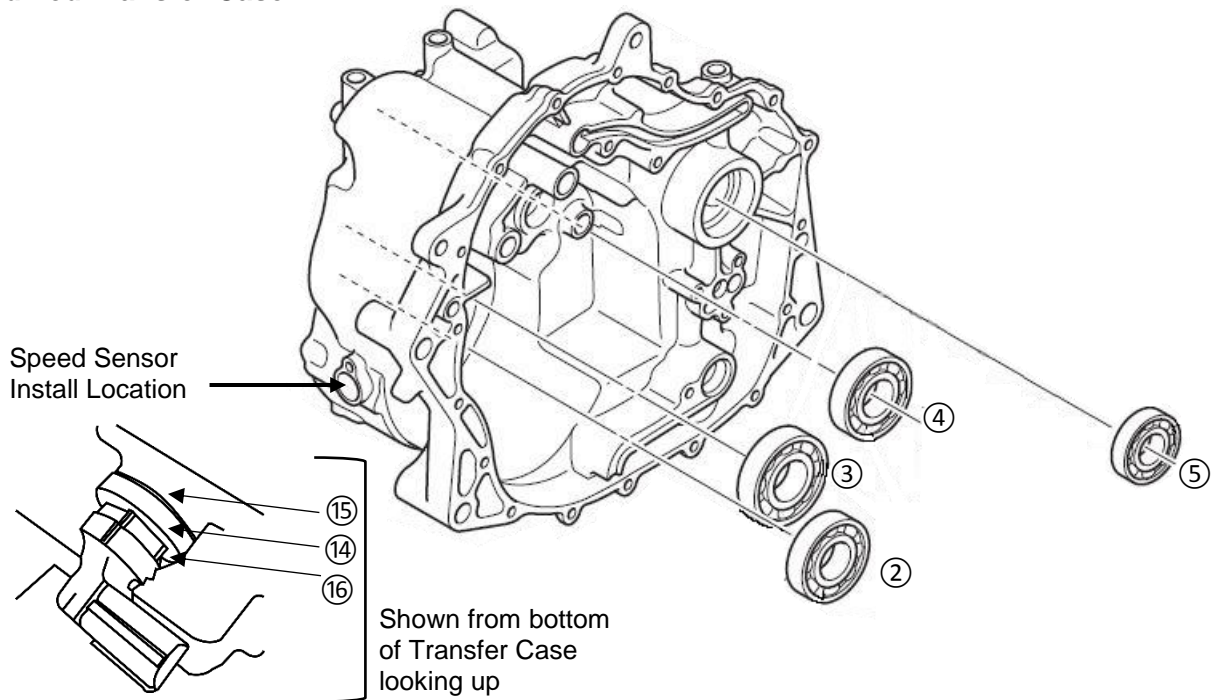


Fig. 2
Shift Shaft and Shift Pawl

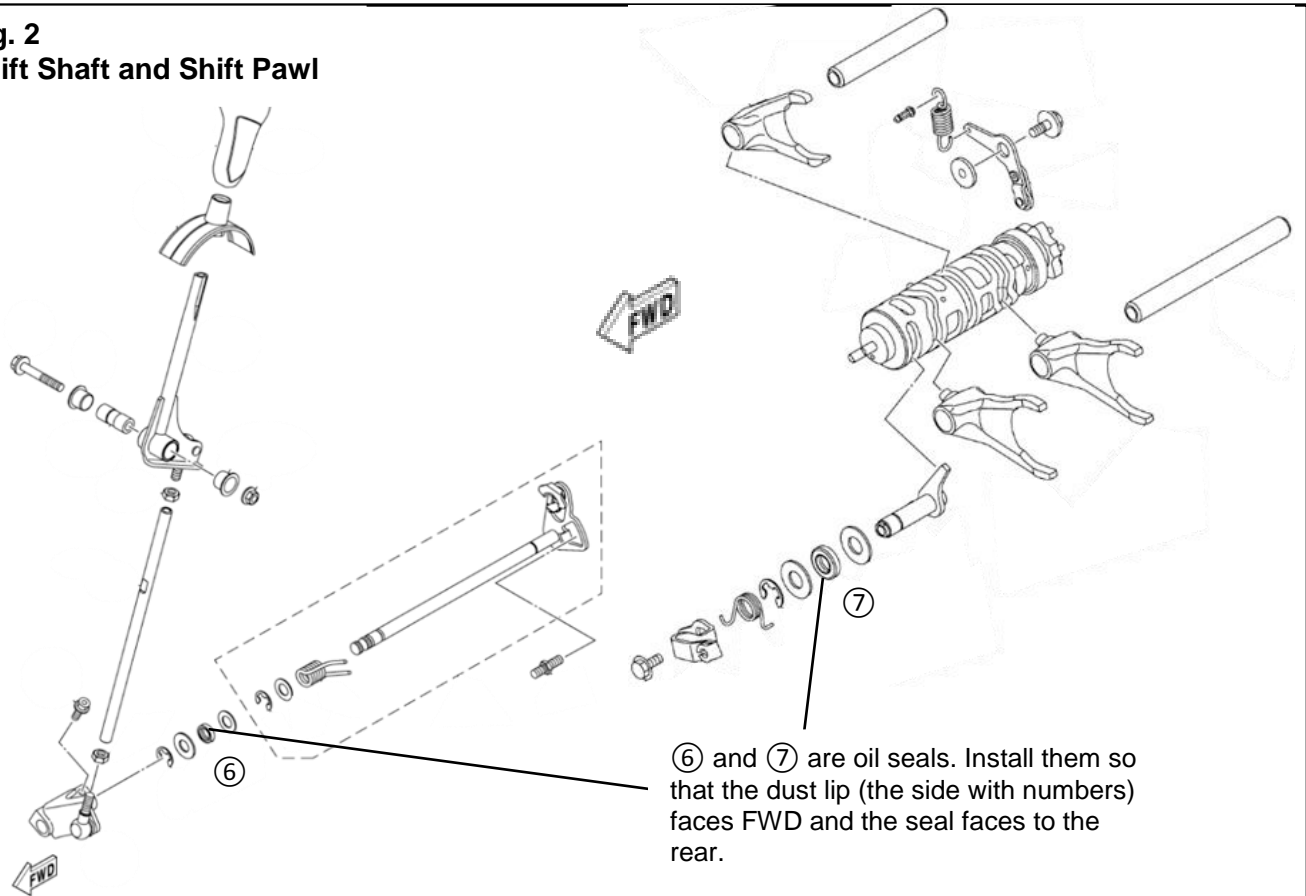


Fig. 3
Drive Axle

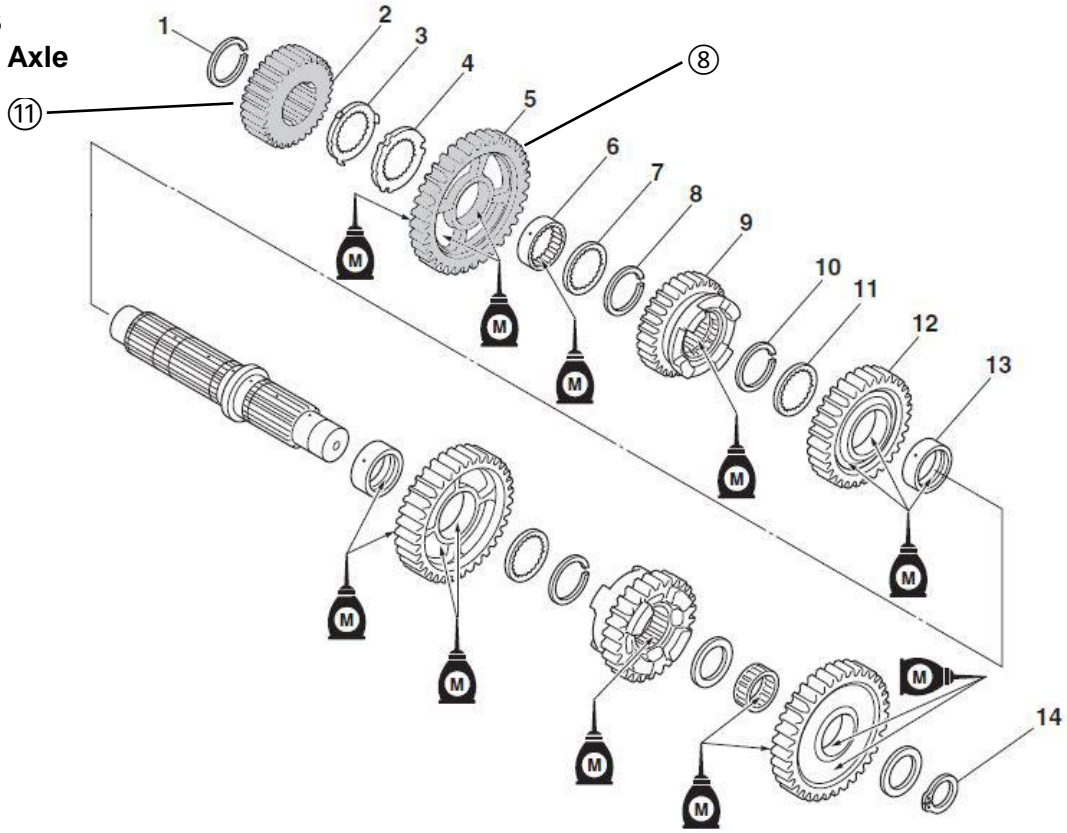


Fig. 4
Main Axle

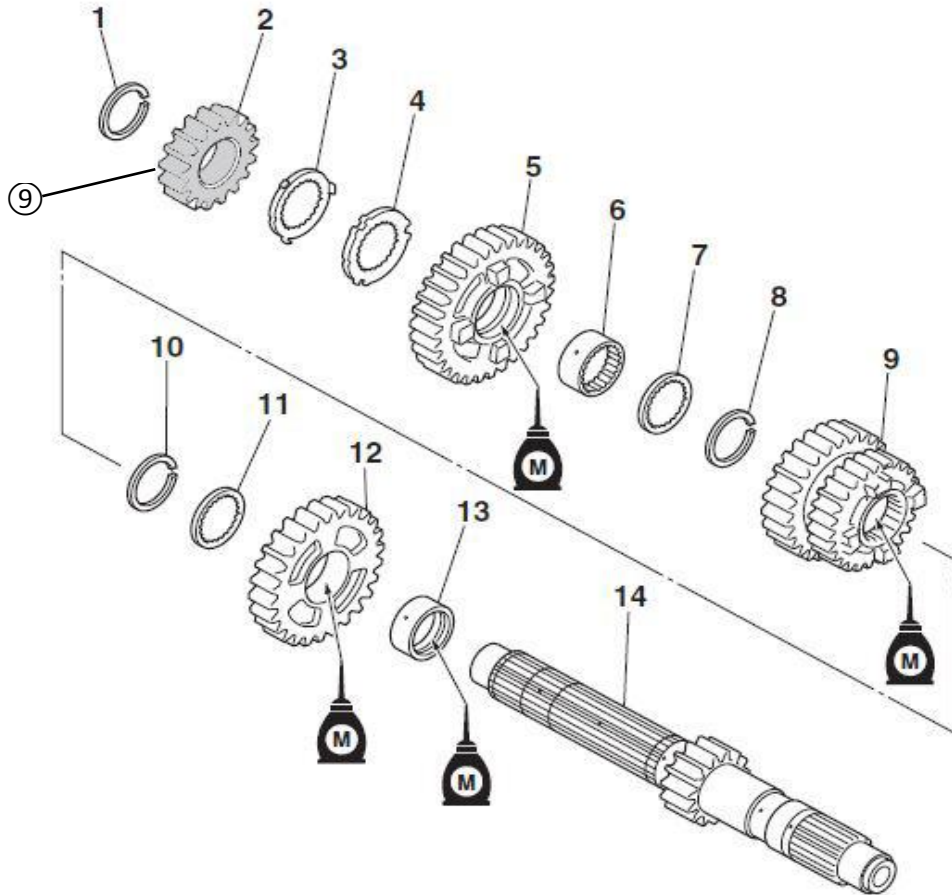


Fig. 5
Middle Driven Shaft

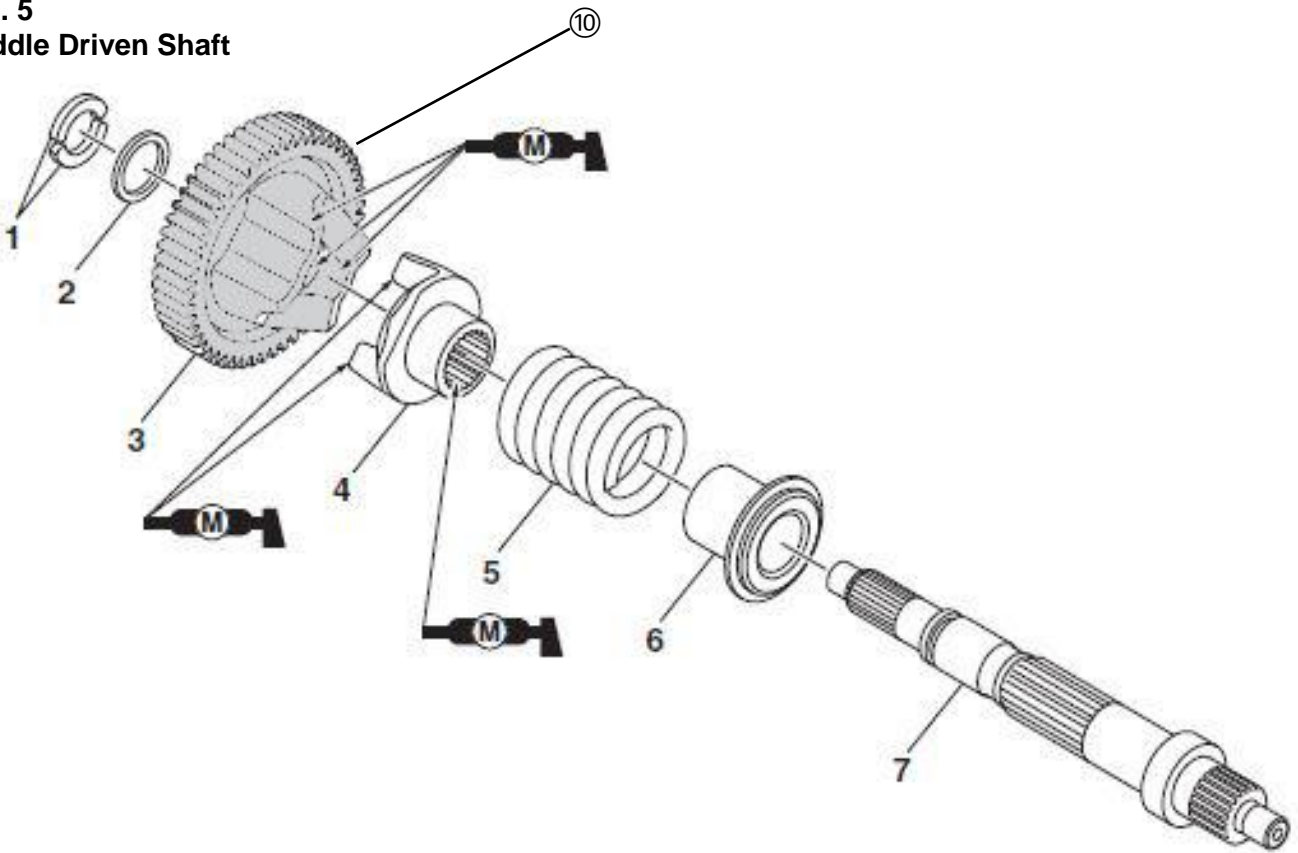


Fig. 6

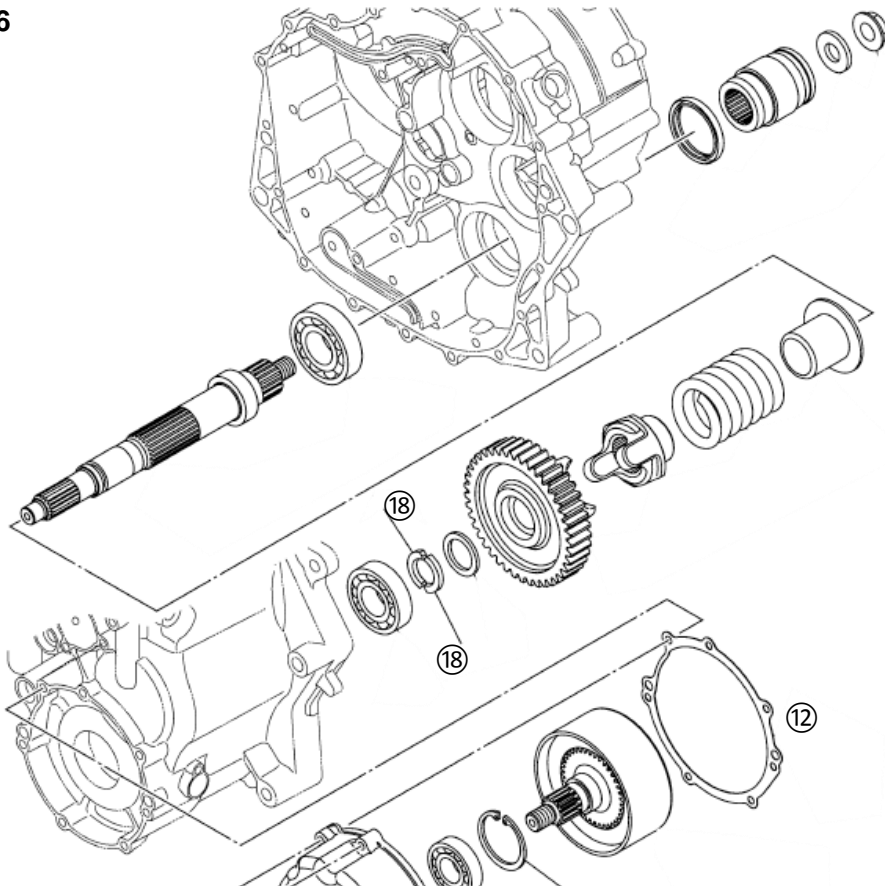


Fig. 7

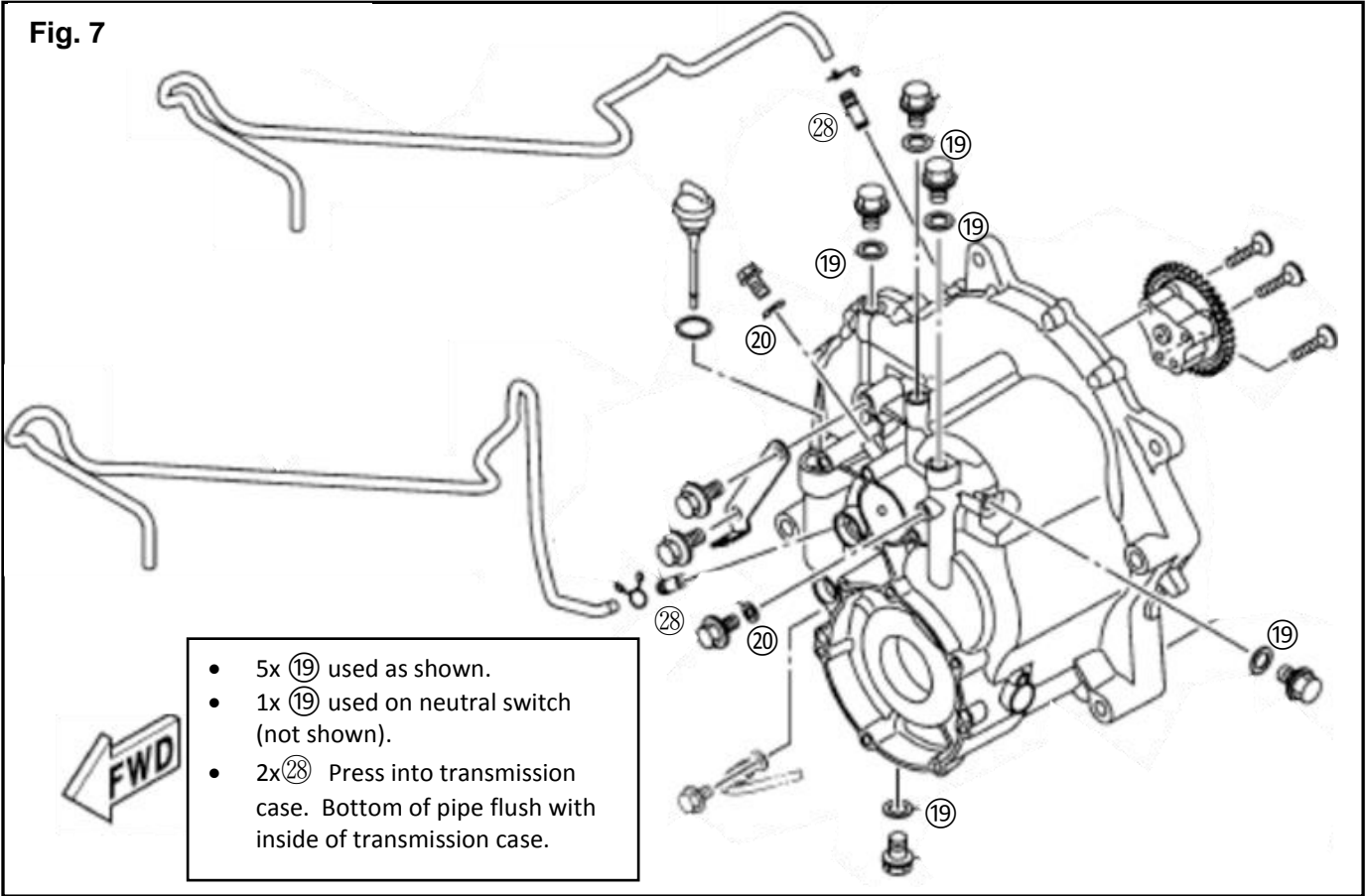


Fig. 8

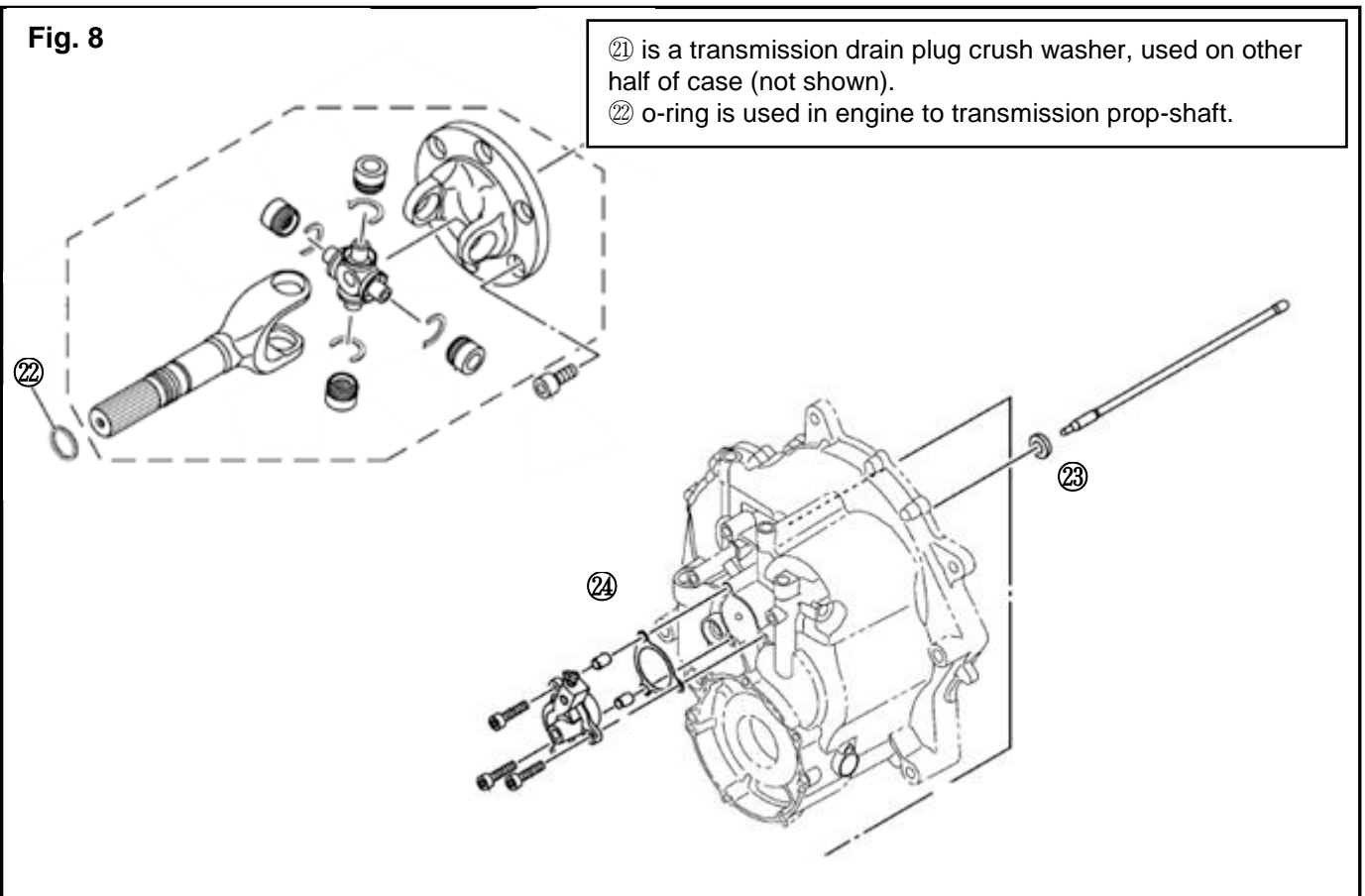


Fig. 9

